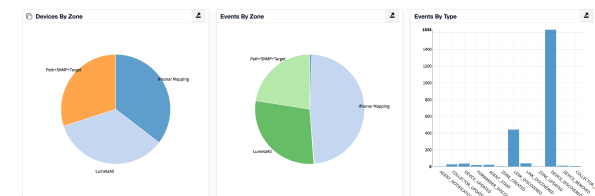


Indexing Statistics Dashboard

Asset Manager dashboards give you an overview of a zone's operational risk status from various perspectives. They enable you to monitor the health of your network.

Navigate to **Dashboards > Admin > Indexing Statistics** for this system-wide overview.



This Indexing Statistics dashboard provides the following information for all Asset Manager [zones](#):

Devices by Zone

- Indicates the size of each network zone relative to the whole.
- Indicates the name of each zone you are monitoring.
- Indicates the number of devices present in each zone.

Events by Zone

- Indicates the volume of events triggered for each network zone relative to the whole.
- Indicates the name each zone you are monitoring.
- Indicates the number of events that took place in each zone.

Events by Type

Indicates the frequency with which these events are triggered. Most are benign (e.g., collector_created, agent-stopped). However, if you notice a spike in a single type of event, investigate! If you see license_violations, remediate!

- Lists the most frequent event types occurring across all network zones.
- Shows a visual indication (i.e., bar chart) of events triggered most.
- Indicates the number of events of each type that took place per zone.

Events Detail

The Events Detail table provides the notification details from which the pie charts are sourced.

name	Message	Time	Zone Name	priority	Automatic
Device Discovered	Device 08150156:02103154 created.	12/15/2016 02:10:16 PM	LunettaALL	INFO	false
Device Discovered	Device 08150156:02103154 created.	12/15/2016 02:10:16 PM	IPsonar Mapping	INFO	false
Node Discovered	Device 65.246.246.79/32 forwards traffic	12/15/2016 02:12:10 PM	IPsonar Mapping	INFO	false
Edge Discovered	Link discovered between 65.246.246.79/32 and 65.246.246.	12/15/2016 02:12:10 PM	IPsonar Mapping	INFO	false
Edge Discovered	Link discovered between 65.246.246.255/32 and 65.246.246.	12/15/2016 02:12:10 PM	IPsonar Mapping	INFO	false
Discovery Agent Notification	BGP Connection error: connect timed out	12/15/2016 02:12:10 PM	IPsonar Mapping	INFO	false
Node Discovered	Device 18.13.1.2/32 forwards traffic	12/15/2016 02:18:58 PM	IPsonar Mapping	INFO	false
Edge Discovered	Link discovered between 65.246.246.255/32 and 18.13.1.2/	12/15/2016 02:18:58 PM	IPsonar Mapping	INFO	false
Edge Discovered	Link discovered between 18.13.1.2/32 and 65.246.246.255/	12/15/2016 02:18:58 PM	IPsonar Mapping	INFO	false
Node Discovered	Device 18.13.1.2/32 forwards traffic	12/15/2016 02:08:01 PM	LunettaALL	INFO	false
Edge Discovered	Link discovered between 65.246.246.255/32 and 18.13.1.2/	12/15/2016 02:08:01 PM	LunettaALL	INFO	false

Records 1 - 10 of 1000.